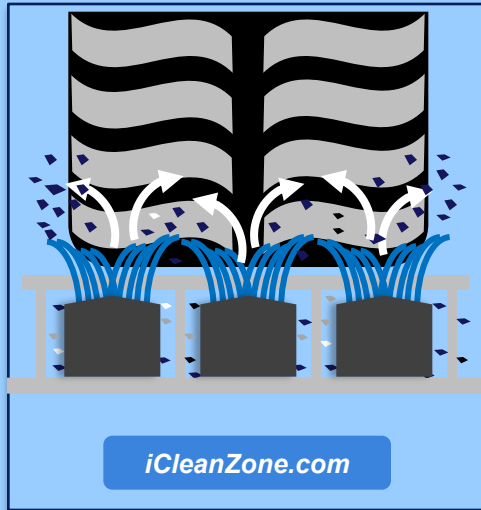
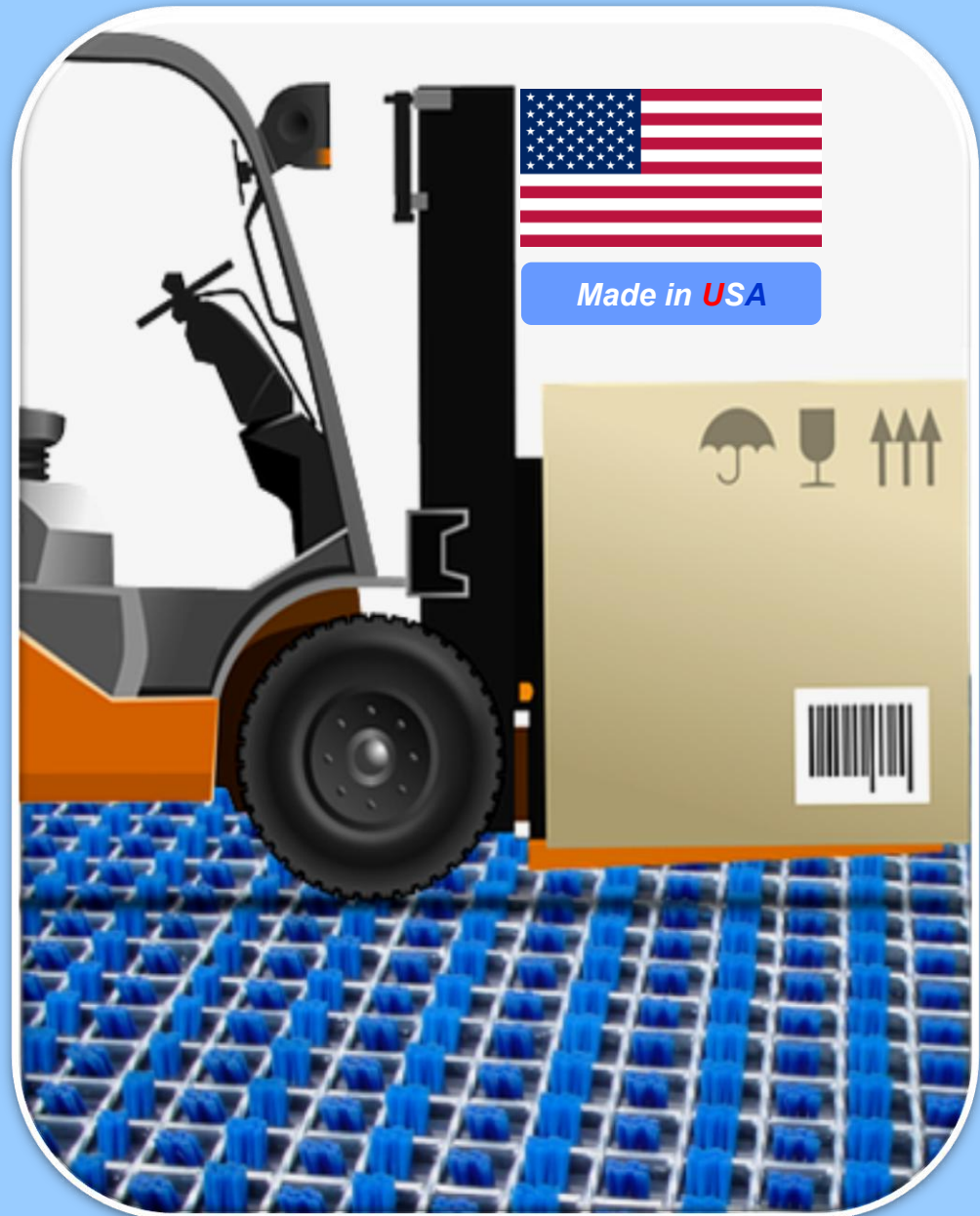


iCleanZone®



*A Clean Environment is
A Safe Environment –*

*With **iCleanZone**®
Cleaning System keeps your
Workplace Clean and Safe*

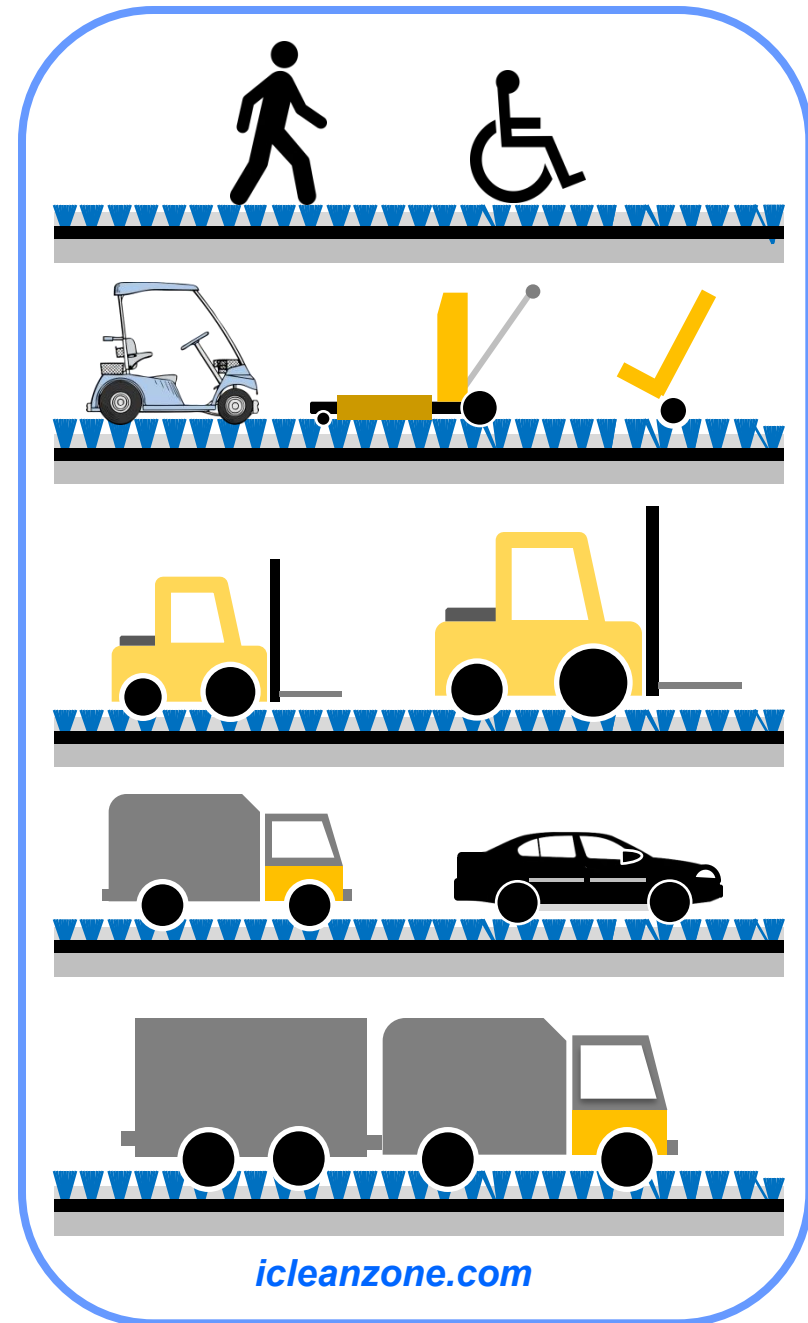


iCleanZone®



iCleanZone® Removes and Contains Dirt in its Place – Off your Floors!

Your company's image and personal pride in the workplace and care for the facilities is often tied to how well maintained you keep the workplace – including the floors. **iCleanZone®** removes, contains and prevents dust and dirt from entering in your plant or warehouse. The contamination of dust and dirt inside the plant or warehouse is often contributed from vehicle tires such as forklifts, cars, trucks, trolley wheels and the shoes soles of foot traffic and others. The result of dust and dirt contamination affects the health of your employees and interfere with the electronic and mechanical equipment and any stored items inside your plant or warehouse which will prevent your industrial facility running smoothly. **iCleanZone®** can be an integral part of preventative maintenance and improving employees health and morale. **iCleanZone®** is a best practice that combines environmental sensitivity with good business sense.



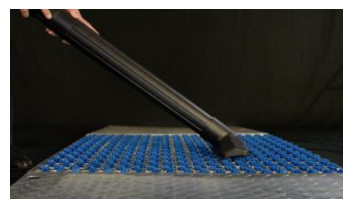
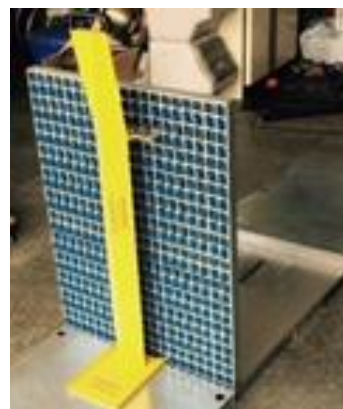
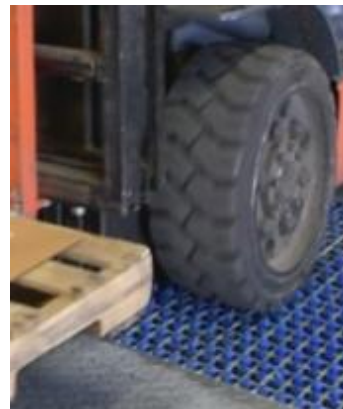


General Description

- *Non-Electrical Debris Removal and Collecting System*
- *Complete Stainless Steel Construction*
- *Standard Bin Size*
- *Available in Two Configurations:*
 - *Recessed in Floor*
 - *Above Floor with Ramps*
- *Engineered for total weight capacity up to 20 Tons*
- *Suitable for all vehicles and other Wide Range of Applications*
- *Stripes of special heavy duty Nylon Brushes set at opposite directions to ensure proper removal of debris from contacting surfaces*
- *Grid with integrated brushes can be removed to clean falling debris inside the container*

Benefits

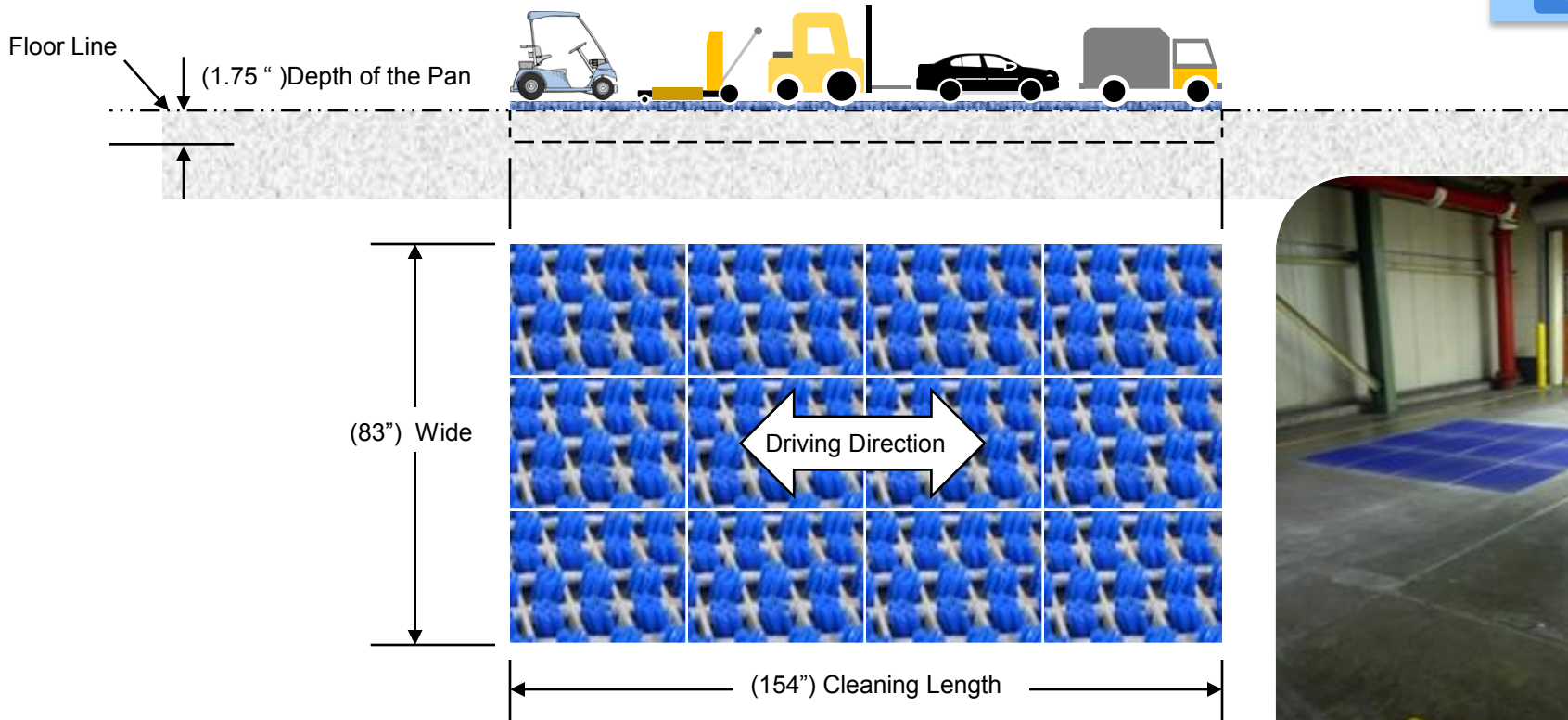
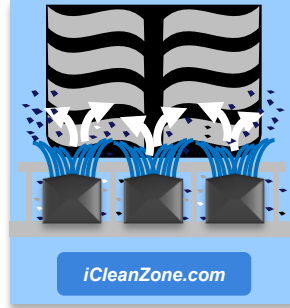
- *Provides superior method for keeping factories and warehouses clean from heaviest forklift traffic*
- *Captures and contains dirt, dust and other foreign objects before entering the plant or warehouse*
- *Saves Time & Money While Improving Your Company Image & Quality*
- *Keeps your Workplace Safe and Clean*
- *Keeping your workplace clean is the Key to Safety*
- *The Safest workplace is a Clean Workplace*
- *Improves your employees health and morale*
- *Provides the best practice that combines environmental sensitivity with good business sense.*
- *Available 24 hours a day and 7 days a week.*



iCleanZone®

Typical Configuration

Recessed in Floor



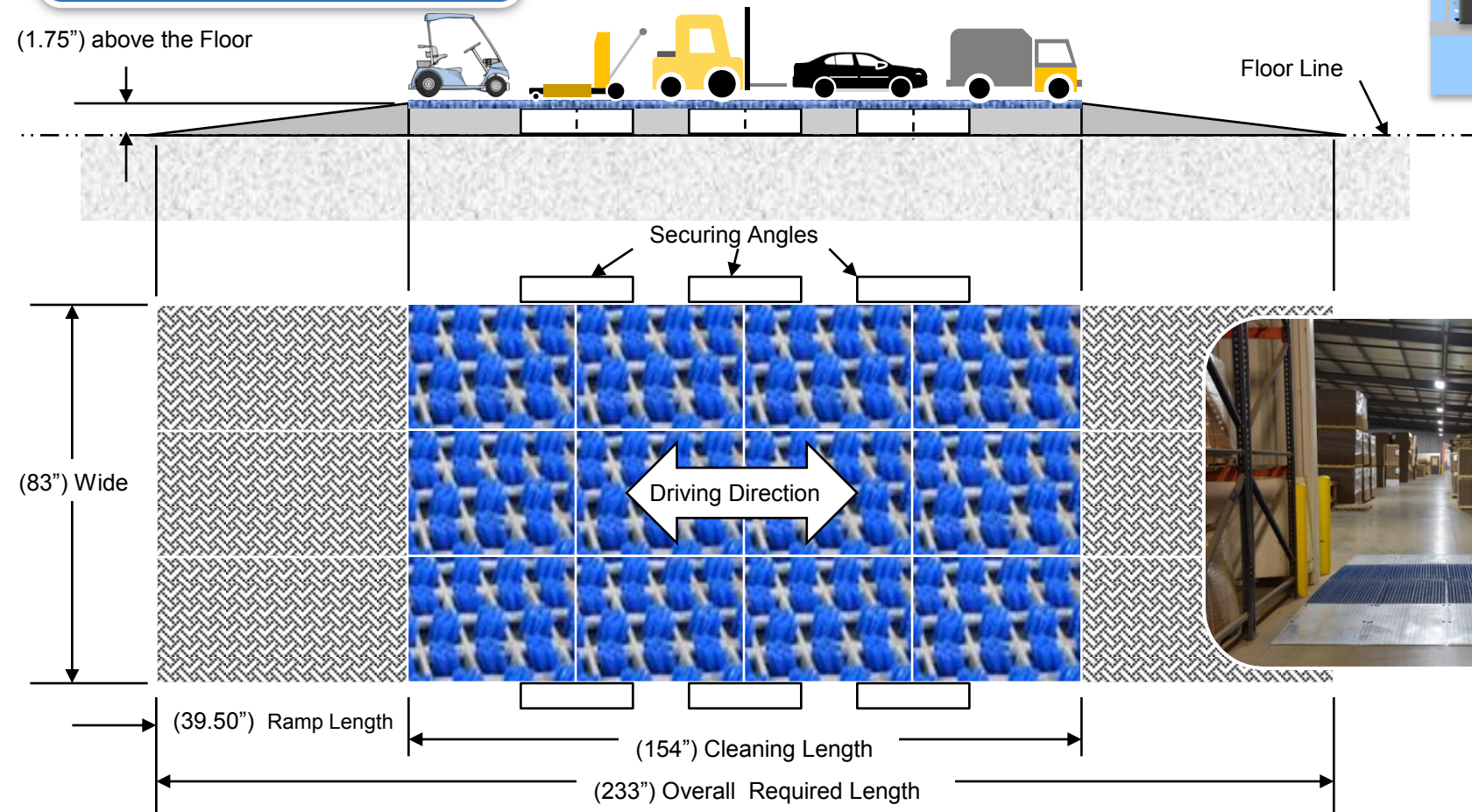
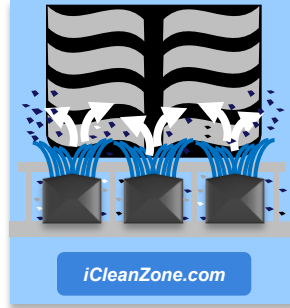
Effective solution for forklifts with tires = or < 14"
Dia. wheels/roles + Walkthrough
Configuration: 3 x 4 (12) iCleanZone-Std Grates
Cleaning Area = (83" wide x 154" Long)

The optimum layout of the iCleanZone®, can vary depending upon the size and space available in each location.

The longer the cleaning grates, the better the dirt capturing efficiency that occurs. As a minimum, the length should cover at least 3 - 4 tire or wheel rotations based on the largest size in the premises. The width should cover the largest vehicle width in the premises

iCleanZone®

Optional Configuration above Floor with Ramps



The optimum layout of the iCleanZone®, can vary depending upon the size and space available in each location.

**Effective solution for forklifts with tires = or < 14" Dia.
wheels/roles + Walkthrough**

Configuration: 3 x 4 (12) iCleanZone-Std Grates + 6 Ramps

Cleaning Area = (83" wide x 154 "Long)

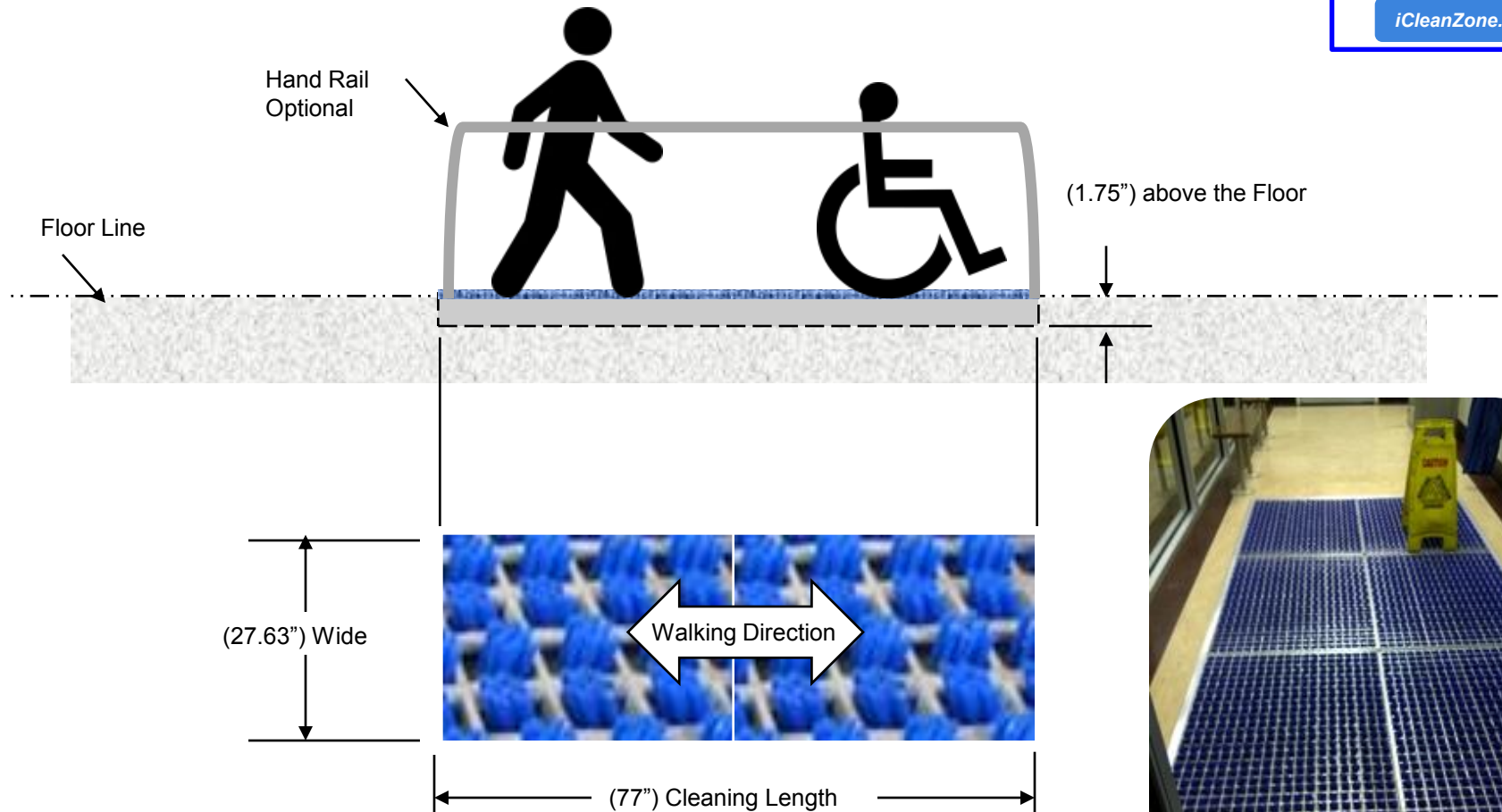
Overall Area Required = (83" X 233" long)

The longer the cleaning grates, the better the dirt capturing efficiency that occurs. As a minimum, the length should cover at least 3 - 4 tire or wheel rotations based on the largest size in the premises. The width should cover the largest vehicle width in the premises

iCleanZone®

Typical Configuration

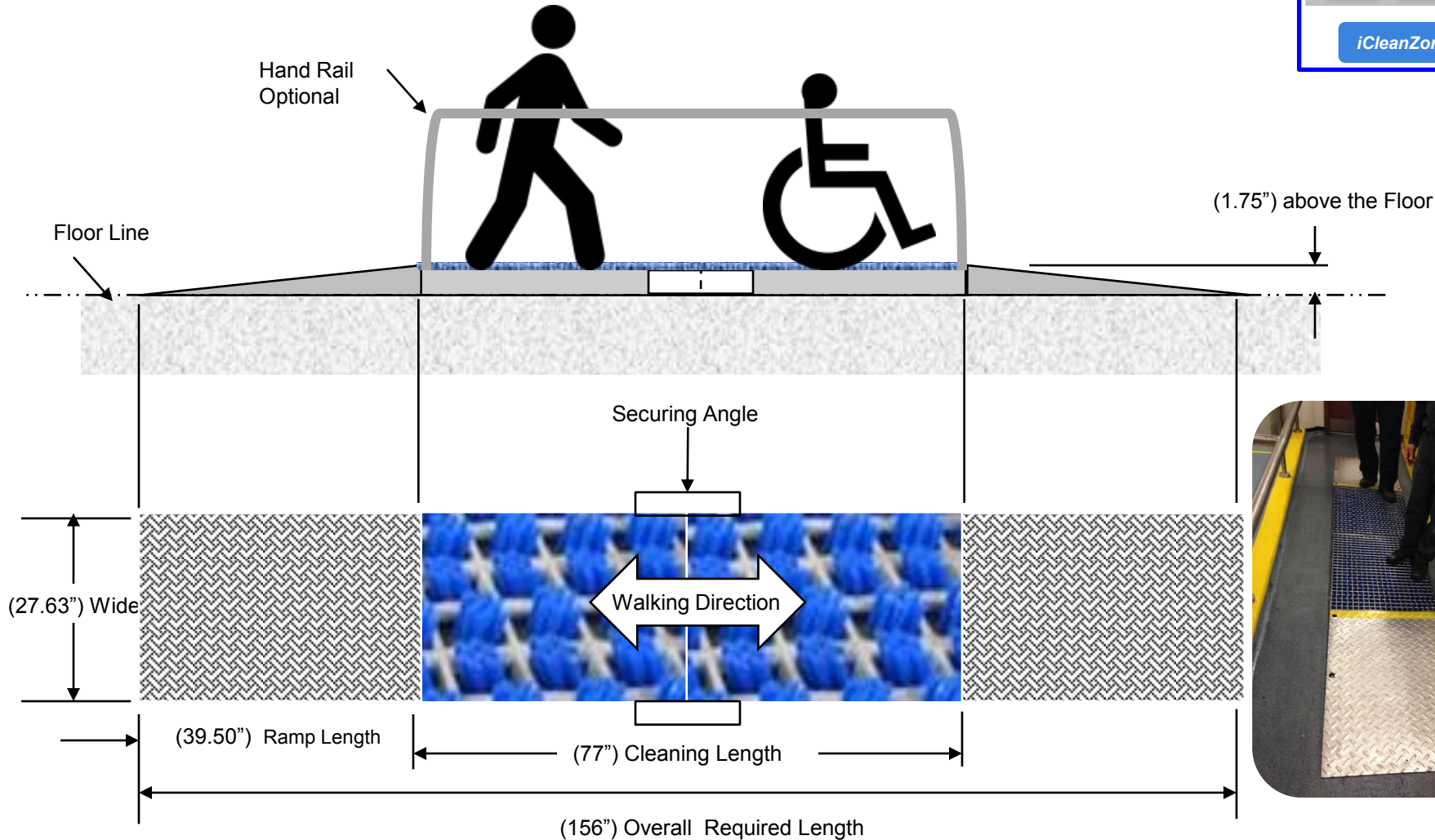
Recessed in Floor for Walkthrough



iCleanZone®

Optional Configuration

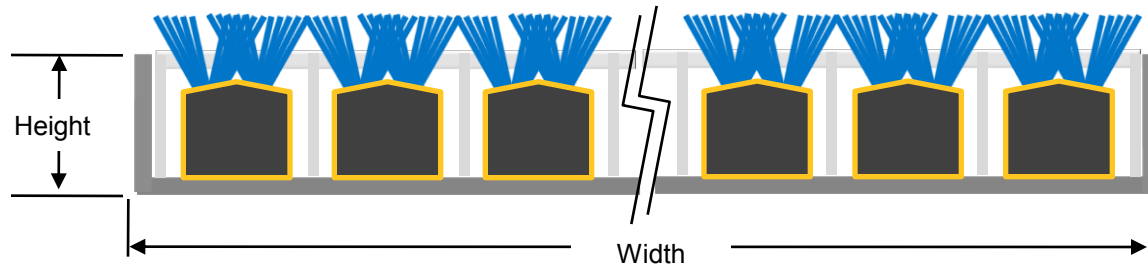
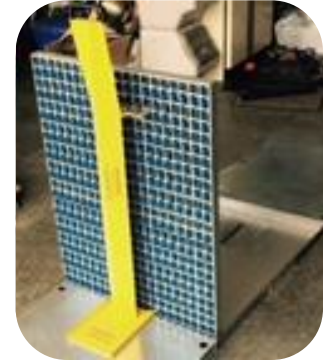
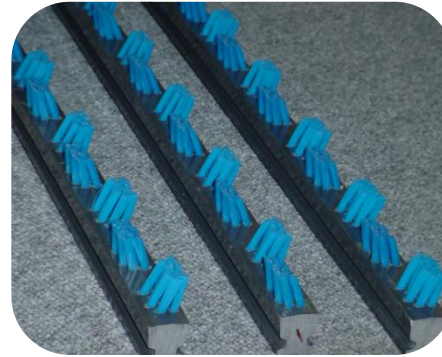
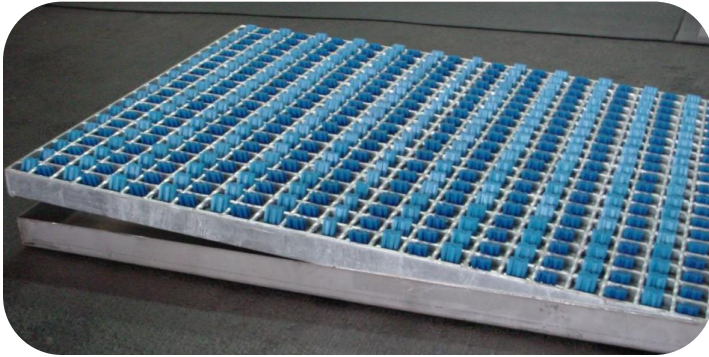
Above the Floor for Walkthrough



iCleanZone®

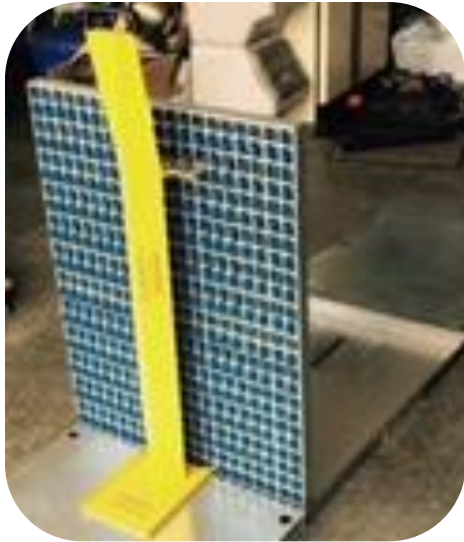
Cleaning Grates

iCleanZone® Cleaning Grate Assembly (dirt and dust capturing system) consist of Hot dipped Galvanized or Stainless Steel Grid with intergraded heavy duty nylon strip brushes can easily be removed and replaced. The Grate Assembly can be lifted to vacuum out the collected debris inside the Pan or moving the vacuum over the panel slowly.



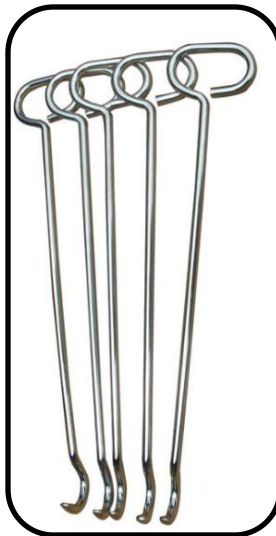
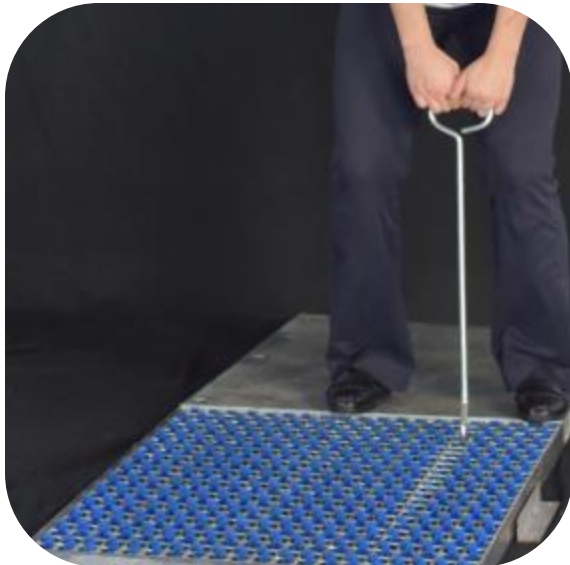
Cleaning Grate Model	Height In Inches	Width In Inches	Length In Inches	Version	Material	
					Grate	Pan
iCleanZone-S	1.75	27.63	38.43	Dry	Galvanized Steel	Stainless Steel
				Wet	Stainless Steel	Stainless Steel
iCleanZone-M	2.00	13.8	38.43	Dry	Galvanized Steel	Stainless Steel
				Wet	Stainless Steel	Stainless Steel
iCleanZone-H	2.50	13.8	38.43	Dry	Galvanized Steel	Stainless Steel
				Wet	Stainless Steel	Stainless Steel

	Grate - Galvanized Steel or Stainless Steel
	Stainless Steel Pan
	Heavy Duty Strip Brush
	Rubber Sleeve at Brush ends to minimize noise impact



Lifting Device – Grate Assembly

Provides safe and easy lifting of the grates with lockable latch mechanism to ensure safety.



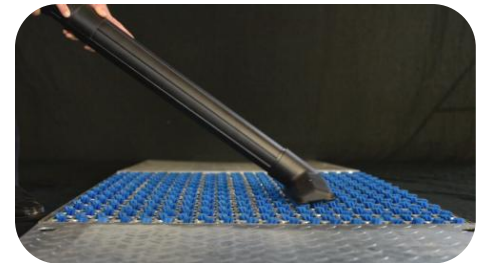
Lifting hooks

to lift the grates and clean the bins (capturing trays)



iCleanZone Vac

to remove and clean captured debris inside the pan



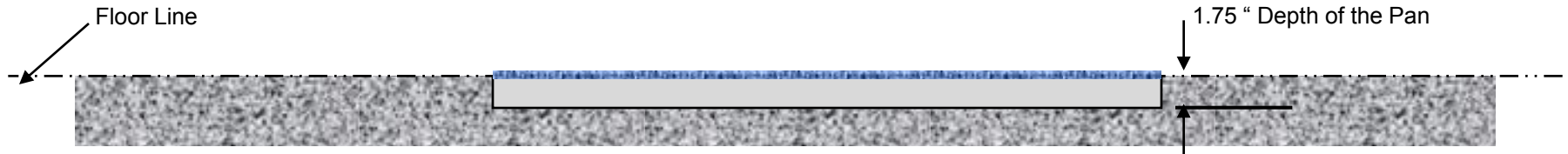
Optional Accessory



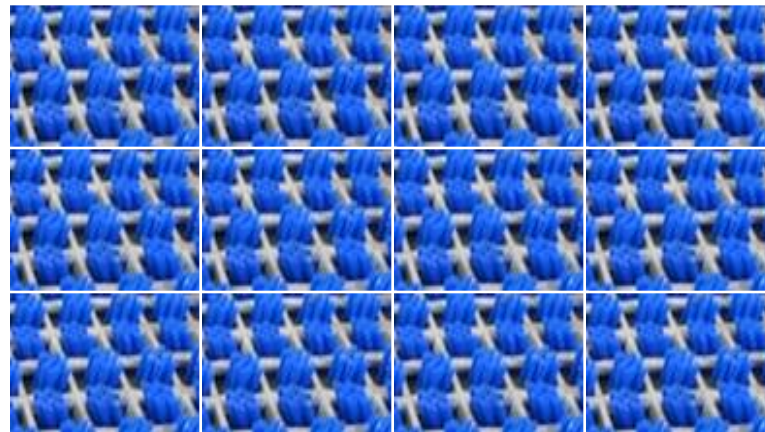
Ramp for above floor installations				
Ramp Model	Height In Inches	Width In Inches	Length In Inches	Material Option
Long	1.75	27.63	39.50	Checkered Galvanized Steel
				Checkered Stainless Steel
Short	1.75	27.63	12.00	Checkered Galvanized Steel
				Checkered Stainless Steel

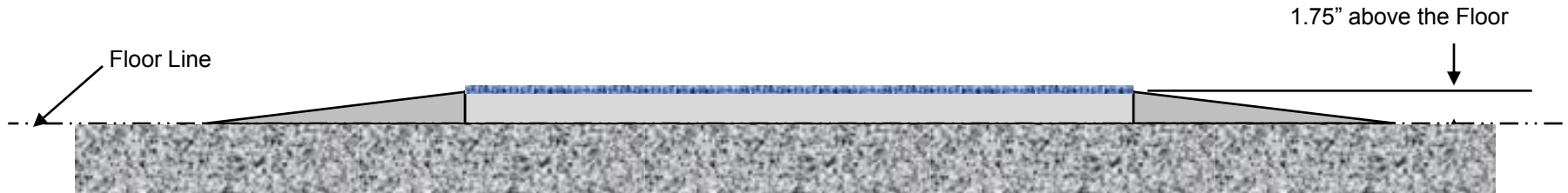


Installation Instructions in Floor

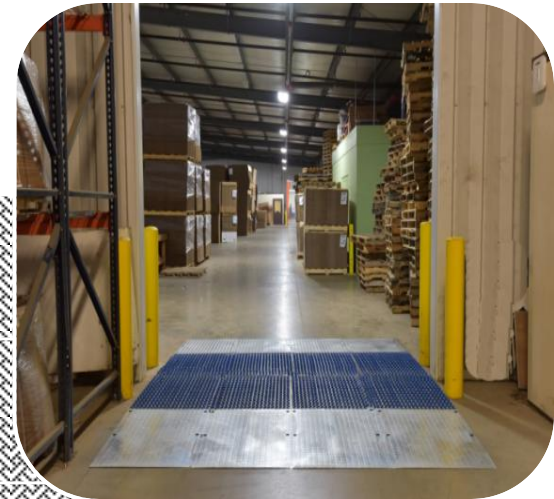
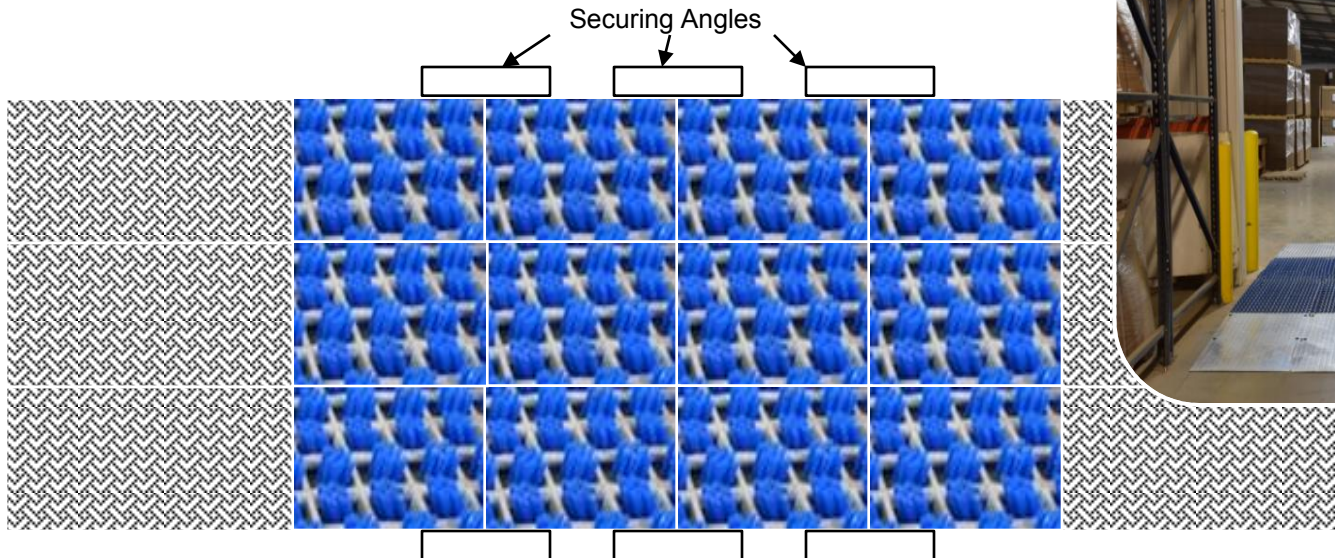


- ① Prep the installation area. The overall area to be 1" larger in width and length of the Cleaning Grate Area. The area to be recessed approximately 2" from the main surface of the floor (1.75" for the Pan height + 3/16" for the filler)
- ② Smooth the installation surface.
- ③④ Apply the filler and place the Pan. Offset the outer Pans 1/2" from the outer edges of the installation area.
- ⑤⑥ Place more Pans and align the Pans with each other.
- ⑦ Clamp the Pans with each other if needed, and allow the filler harden. Fill in the joints between the Pans and outer edges of the installation area with joint filling.
- ⑧ Place the Cleaning Grates in the Pans.
- ⑨ iCleanZone® is ready to clean.





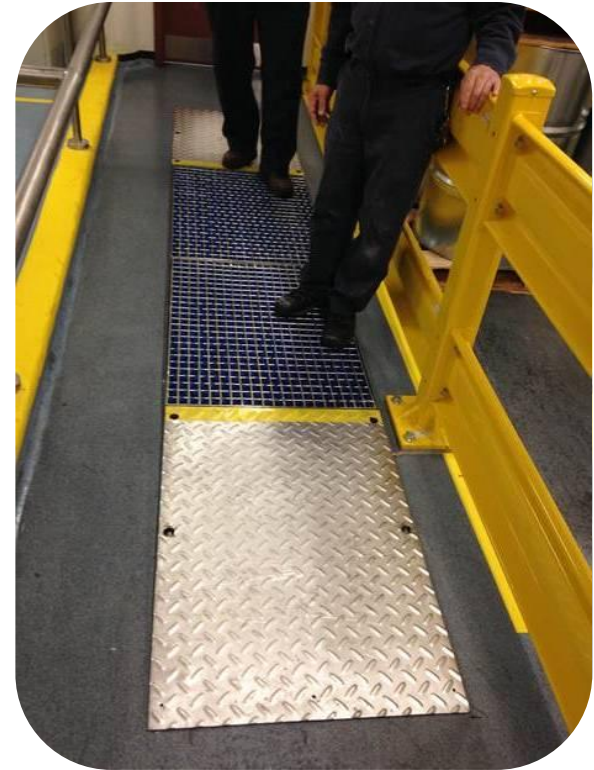
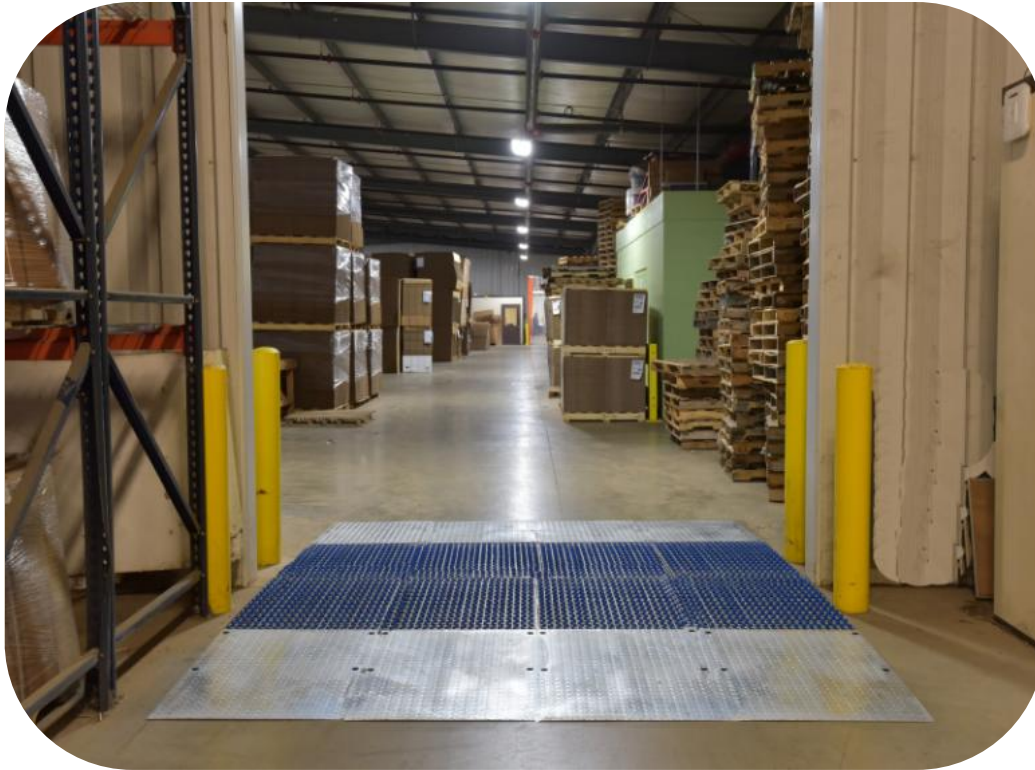
- ① Identify and prep the installation area.
- ② Arrange the lay the Grate Pans and the Ramps in the installation area.
- ③ Obtain and locate Securing Angles centered 2 Pans split line.
- ④ & ⑤ Drill holes in floor locate from the holes in the Angles and install fastening hardware.
- ⑥ Drill holes in floor locate from the holes in the Ramp and install fastening hardware.
- ⑦ Place the Grates in the Pans.
- ⑧ **iCleanZone®** is ready to clean



iCleanZone®

Reference Installations





iCleanZone®

*Test the **iCleanZone®** Cleaning System with our Rental Option*

If you're interested and would like to try the iCleanZone® 'cleaning system before making the big business investment decision? We will work with you and develop a trial configuration as a rental option before making your final decision.

The rental option allows you to install the iCleanZone® system on your existing floor with access Ramps on both ends and with no need of cutting through your concrete floor. In addition, this option allows you to evaluate the cleaning effectiveness and performance of this system and help you the determine your business decision.



iCleanZone®

Reference Customers



MARS



Bariatric Nutrition



Thomas&Betts

Alcoa

WRIGLEY



**BOCA
BEARING**

Lakeside Links Golf Club	Palmetto Golf Course
Kingsway Country Club	Hillcrest Golf & Country Club
Eagle Ridge Golf Club	Old Corkscrew Golf Club